

MEMBERS DONORS VOLUNTEERS:

Here's how you helped us help Crawford County throughout 2018

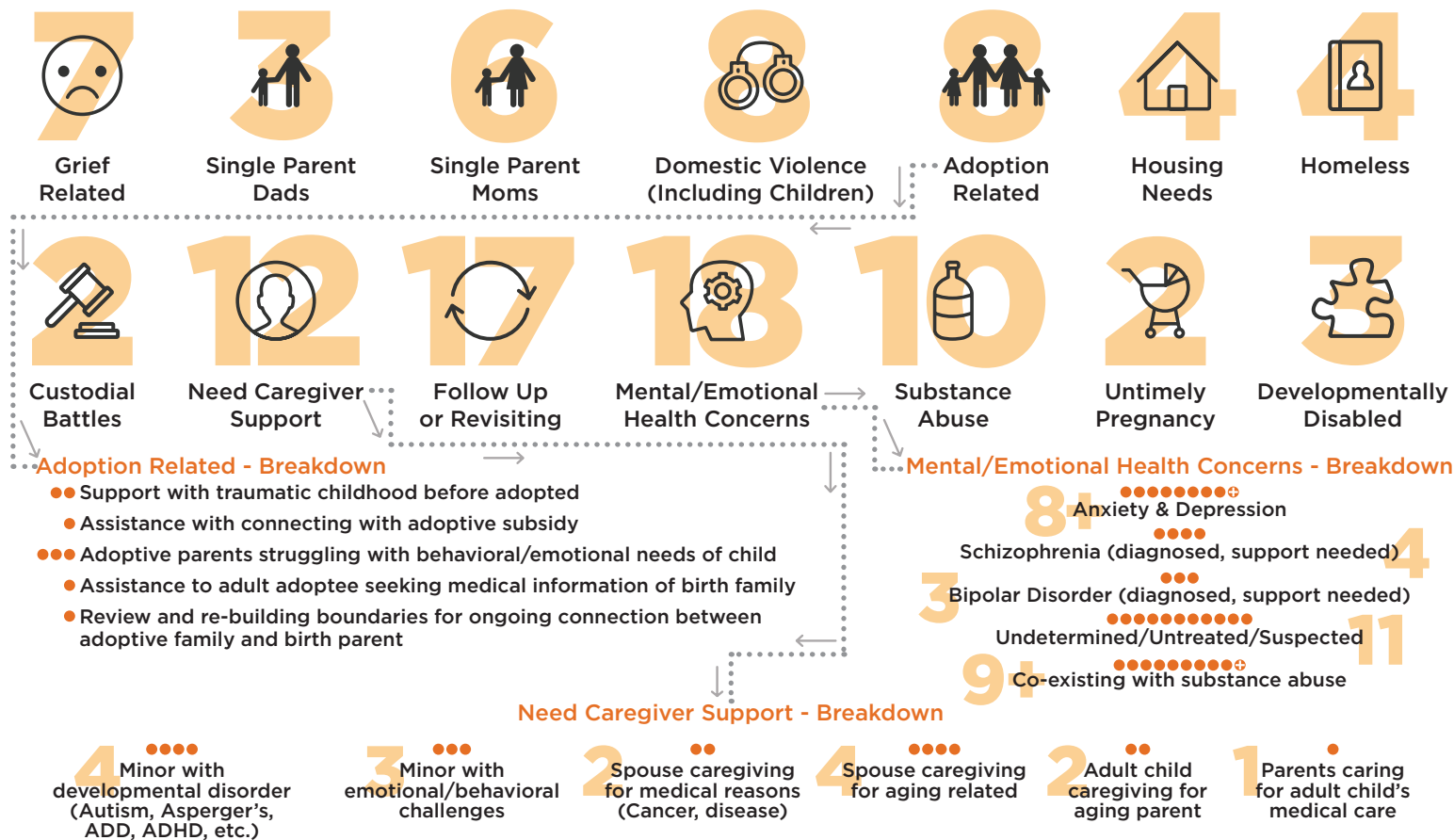
Thank you for strengthening FAMILY with us!



Crossroads
of Crawford County

While the intense and urgent needs identified here require more times of direct contact to effectively serve, more of the families we helped have issues that are less pressing and may come to us only one or a couple times for listening, encouragement, and resources.

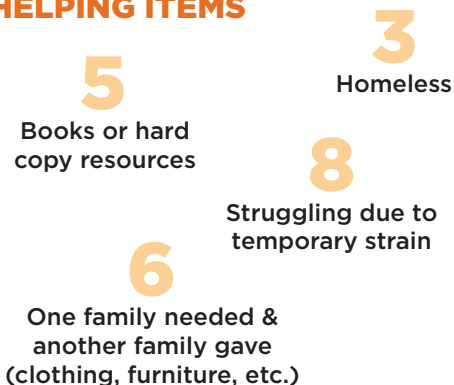
WE ATTENDED FAMILIES



WE NUTURED EVERYDAY LIVING

- Stress due to family issues
- Work-related stressors
- Relationship Issues
- Children traumatized
- Parenting struggles
 - preschool through young adults
- Financial challenges
- Anxiety and/or depression
- Religious help
 - discouraged, illness, devotionals
- Aging Parents
- Marriage seasons
- Caregivers
- Health related stressors
- Attention to youth, teens

WE RECRUITED OR HAD PRACTICAL HELPING ITEMS



WE RESOURCED

- Finding reliable information specific to personal situations
- Sr. Citizen housing options
- Healthy Diet, Nutrition,
- Optimal Emotional Health
- Specific Mental Health issues
- Specific medical conditions
- Aging issues (dementia, legal preparations)
- Veteran benefits
- Family lifestyle
- Grief Recovery
- Financial
- Faith
- Parenting tools and skills

We All Hit Rough Times—

These 2018 figures include the young and the old; all incomes, many professions, & underemployed or disabled; members of local congregations & unchurched.

WE DELIVERED

Schleswig Meals on Wheels

27

Subscribed recipients

14

Avg. recipients per delivery

102

deliveries arranged

7 volunteer drivers & middle school students

3060 combined miles (most donated)

drove on Tuesdays while Wesco Day Hab Program drove on Thursdays

WE COMPLETED

FEE-BASED SERVICES

Custodial Home Evaluation



Hired underemployed helpers to prepare a full house for sale & moving

WE ARRANGED

CREATIVE HELPING

3 Finding suitable housing for families

5 Temporary task creation for underemployed adults

4 Task creation for developmentally disabled youth and adults

3 Mentoring support assigned to youth

2 Parent peer mentoring support

4 Senior mentoring support helping/befriending

WE MANAGED

UNIQUE INCOME AVENUES

Sparrows Nest - Created space, inventory of

\$2207

plus more in donations



The Sparrow's NEST

Crafters offering from 15 to 50% off retail price

14+

at The Sparrow's Nest

Schleswig Can & Bottle Redemption

21,982+

Also, printer cartridge recycling

OTHER ACTIVITIES AND EVENTS

- Moved to new location in March
- Open House/Ribbon Cutting in June
- Sparrow's Nest Gift area opened
- Family Den visiting area opened
- Family Helping Closets set up
- Fall Fundraiser-Dinner/Auction
 - Over 100 recycled, upcycled, repurposed or crafted items donated for auction
 - Over 40 crafters donated time
 - 22 Sponsors for projects
 - 7 Table sponsorships
- Coat Drive
 - 130+ coats collected
 - 40+ shared (Remaining brought to West Central)
- Christmas Open House

WE RECEIVED

REFERRALS FROM

- Public Health
- Teachers
- Domestic Violence Professionals
- Transitional Living Professionals
- Pastors
- Public Assistance Professionals
- Local Business People
- Neighbors, Friends, Relatives, Family
- Self Inquiry
- Attorney

WE MADE

REFERRALS TO

Public Health | Home Health | Domestic Violence Professionals
 Pastoral Care | Transitional Living Professionals | Public Assistance Avenues
 Medical Professionals | Mental Health Professionals
 Programs for: Disabled, Emotional Health, Grief Support

REOCCURRING THEMES (NEVER ENOUGH):

Nurturing parental support/skills
 Post substance abuse treatment support
 Understanding of mental/emotional/developmental health issues
 Caregiver Support

Connection to purposeful alternatives for salaried work for disabled/underemployed adults

Strengthening Families in Crawford County in big & small ways!



"I didn't know who I could go to find a good adult who could just spend time with my child and help them gain some confidence and learn how to get along with their friends"



"Dad needed someone to just visit with Mom and give him a break"



"I was scared to go to therapy, but with Crossroads' patience and help and reinforcing why it was important, I found someone I trust and am comfortable with"



"Our child is in substance abuse treatment, we have so many emotions going on!"



"I'm pregnant and my situation is very complicated. What if I am not ready to parent yet?"



"We learned of some educational resources available to kids with special needs"

Community Outreach for Life's Journey

3707 Timberline Drive, Denison, Iowa 51442 • 712.393.4673(HOPE)
www.crossroadsofcrawfordcounty.org • info@crossroadsofcrawfordcounty.org